

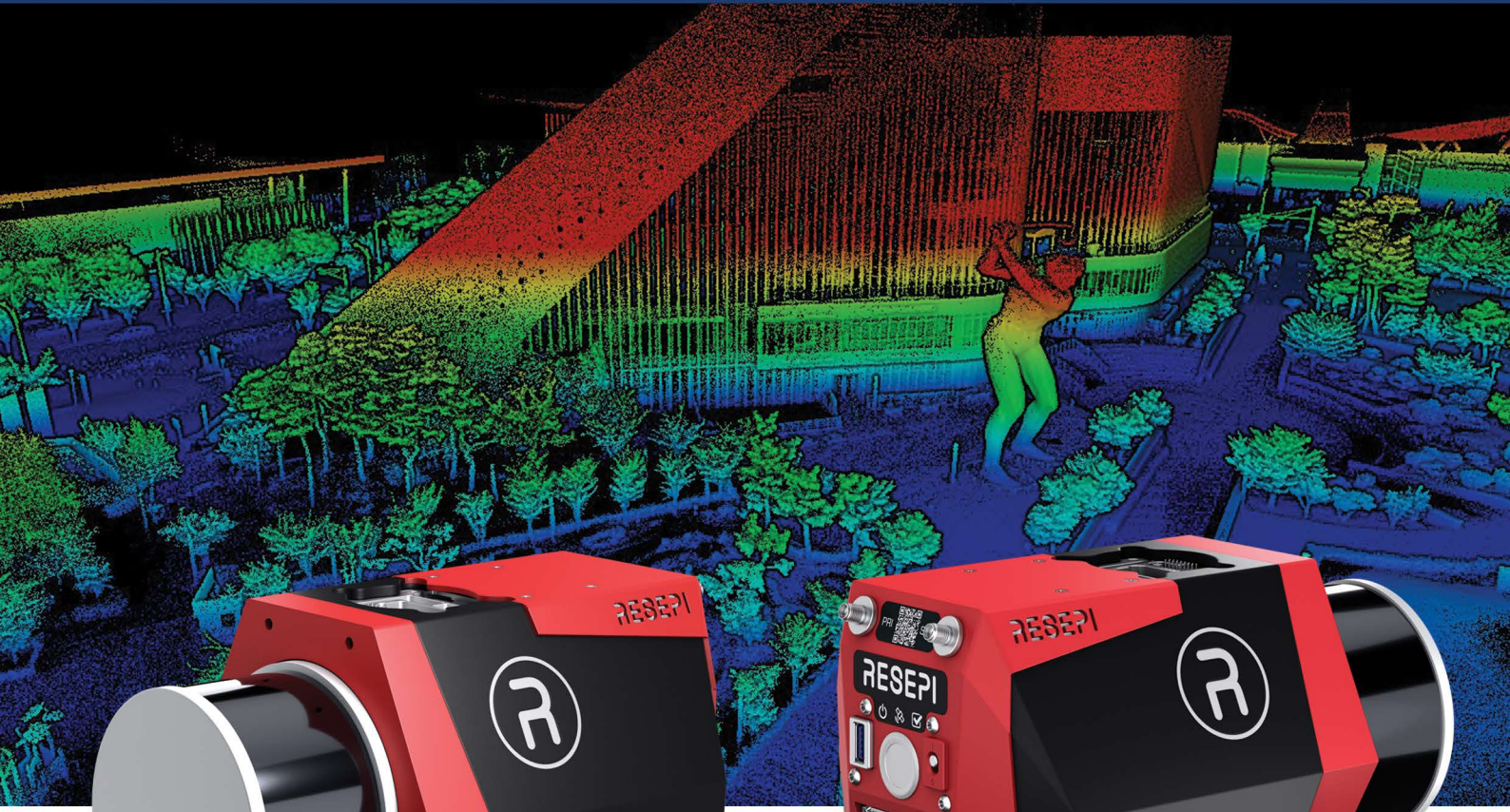
WISPR Systems SkyScout Pro



RESEPI™ GEN-II
M2X-ILX

Sony ILX-LR1 61MP

RESEPI™ GEN-II M2X-ILX



System Vertical Accuracy	2 - 3 cm
Precision	2 - 4 cm
Precision (1 σ Noise Removal)	1.5 - 2.5 cm
Recommended AGL	Up to 150 m
Weight	1.7 kg
Dimensions	21.6 x 17.8 x 13 cm
Max Flight Time (DJI M350)	33 minutes
Internal Storage	512GB SSD
System Computer	Hexacore, 8GB DDR4 RAM, 16GB eMMC
Operational Voltage Range	9-50V
Power Consumption	25 W
Camera	61MP Sony ILX-LR1



Drone

Maximum Sustainable Payload	3 lbs.
Max Flight Time to Battery Failsafe	With No Payload -> 35 min. With Payload <2.2 lbs: 30 minutes (+/- 2 minutes)
Max Wind Rating	50 MPH Tested
Collision Avoidance	Forward, Backward
Terrain Follow Source	GNSS (high altitude) or LIDAR Range Finder (low altitude)
Fully Assembled Dimensions	23" x 23" x 14"
Folded Dimensions	13" x 10" x 4"
Battery Configuration	2 x WISPR Smart Batteries 22.8V 4350mAh (Hot swappable)
Weight	4.925 lbs. (2.24 kg)
Max Takeoff Weight	12 lbs.
Max Speed	50 MPH
Operating Temperature	-4° F to 122° F
Propeller Size	18.2" x 5.9"
Orientation LED Light Covers	Red (Rear), White (Front)
Flight Controller	Cube Orange+
I/O Ports	MicroUSB (Flight Controller and GPS access)
Frame Type	Quad Copter
Made in America	Yes

GNSS

GNSS Receiver	Ublox Neo-F9P
RTK Compatible?	Yes
GNSS Band	L1 and L5
GNSS Constellations	GPS+Galileo+Glonass+BeiDou (Default, but can add more)
IMU	ICM42688+RM3100

Video Transmission

Live Preview Quality	1080p @ 30fps
Frequency	2.4Ghz over LTE
Range	9 miles
Antennas	2 x Antenna

Smart Batteries

Voltage	22.8V
Capacity	4350mAh (99.18 Wh)
Battery Weight	1.4 lbs. (630g +/- 20g)
Charging Time	45 minutes

Software

Flight Controller Firmware	WISPR Flight Firmware (custom ArduPilot build)
Mission Planning	WISPR Ground Control

Sony ILX-LR1 61MP



Camera

Sensor	Exmor R CMOS sensor
Sensor Size	1.38" in Full Frame
Sensor Width	1.41"
Sensor Height	0.94"
Photo Resolution	61 megapixels
Image Size	9504 x 6336
Photo Format	JPEG, HEIF, RAW
Video Resolution	4K @ 59.94p max 1080P @ 119.88p max
Video Format	XAVC S: MPEG-4 AVC/H.264 XAVC HS: MPEG-H HEVC/H.265
Shutter Type	Mechanical shutter/Electronic Shutter
Shutter Speed	Still images (Mechanical shutter): 1/4000 to 30 s Still images (Electronic shutter): 1/8000 to 30 s Movies: 1/8000 to 1 s
Exposure Settings	+/- 5.0 EV (1/3 EV, 1/2 EV steps selectable)
ISO Sensitivity	Still images: ISO 100 - 32000 (expandable to ISO 50 - 102400), AUTO (ISO 100 - 12800) Movies: ISO 100 - 32000 equivalent, AUTO (ISO
PAL/NTSC	Supported

Camera Lens

Lens Options	Sony FE Mount 35mm f2.8 Sony FE Mount 50mm f2.8
Field of View	35mm f2.8 -> 62° 30mm f2.8 -> 47°

Gimbal

Angular Vibration Range	±0.02°
Maximum Controlled Rotation Speed	Pan axis: 180°/s Tilt axis: 180°/s Roll axis: 180°/s
Mechanical Endpoint Range	Pan axis control: ±326° Tilt axis control: +50° ~ -140° Roll axis control: +50° ~ -274°
Controlled Rotation Range	Pan axis control: ±320° Tilt axis control: +40° ~ -120° Roll axis control: ± 40°
Operating Temperature	32°F - 122°F



ImpulseRadar USA, Inc.
4509 Savannah Hwy Ste. 18
Ravenel, SC 29470,
USA
Tel: +1 843 412 0206

info@impulseradargpr.com



www.americas.impulseradargpr.com