



Turn your **mobile phone into a 3D scanner** and capture the world

Document as you work
Annotate on-site

RTK
accurate scanning

Augmented Reality
IFC, CAD & GIS overlay

Optimized
GCP workflow



Augmented reality: visualize with precision

Overlay point clouds, CAD models, or GCPs in AR to compare and analyze on-site for quick decisions

Quick volume computation

Measure stockpiles or flats in seconds and share results instantly for faster decision-making

GCP workflow: simplified accuracy

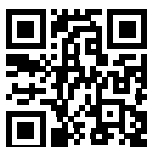
Boost precision effortlessly with our easy-to-use Autotags

RTK-ready survey tool

Combine PIX4Dcatch with GNSS for precise point measurements, usable as GCPs or in AR

A unified workflow

Seamless data transfer between PIX4Dmatic, PIX4Dcloud, and PIX4Dcatch for maximum efficiency

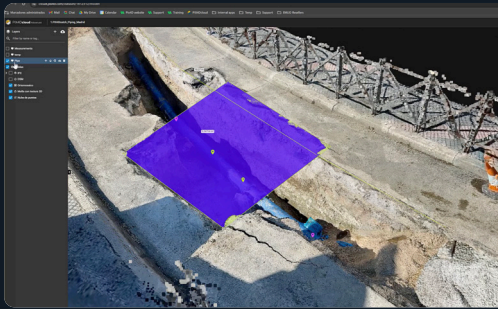


Try for free!
Learn more at
pix4d.com/catch

 Developed in Switzerland



How can PIX4Dcatch help you?



Subsurface utilities

Quickly scan open trenches and use AR for closed-trench subsurface views. Easy annotations, measurements, and volume calculations, saving time and reducing costs.

Construction

Seamlessly overlay CAD files onto real sites and compare. Upload to cloud for collaborative annotations. Speed up plan reviews, detect issues early, and keep projects on schedule and budget.



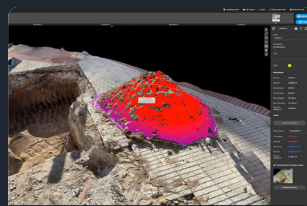
Surveying

Streamline surveying, eliminating the need for complex tools. Integrate with PIX4Dmatic and PIX4Dcloud for easy data merging, processing, and sharing of detailed reports with annotations.

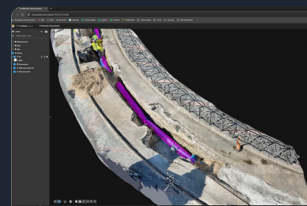
Workflow



Walk around and capture ground data



Process data on cloud or desktop



Export to CAD, BIM, and GIS



Verify with AR

Compatible with:



DA2



CR-H1



ZENO FLX100 PLUS



REACH RX & RX2



Bad Elf

FLEX & FLEX MINI