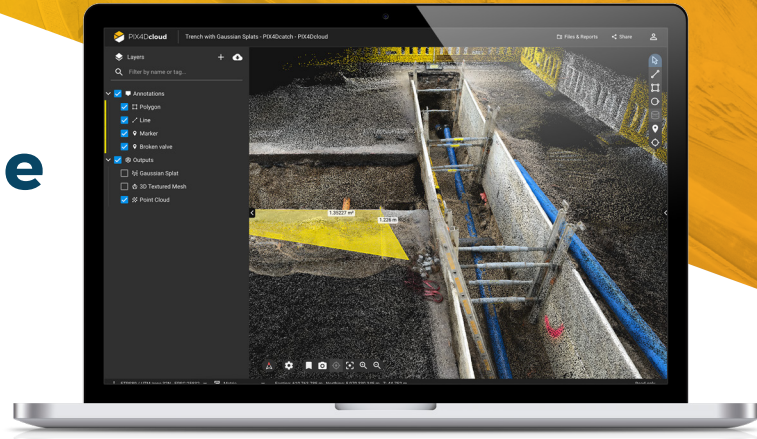




PIX4Dcloud

The online platform for ground and drone mapping, progress tracking, and site documentation



Accurate results

Rely on Pix4D's processing algorithms to get survey-grade results from images. Choose the AutoGCPs feature for even greater accuracy



Analysis made easy

Access any jobsite from your browser. Compare results over time to validate changes, track progress, and maintain a consistent, auditable record of site evolution



Up-to-date documentation

Keep a permanent visual archive of your jobsite. Resolve disputes with stakeholders and clients more efficiently



Collaboration without limits

View your jobsite instantly, in 2D or 3D, from any browser. Measure, explore, and share your project data to make collaboration easy



Unlimited users

Give access to your whole team. PIX4Dcloud supports unlimited users per organization, included at no extra charge



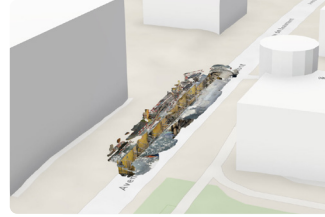
Map, measure, track the progress of your site

Range of outputs



Gaussian splatting

A georeferenced 3D processing technique adapted from real-time rendering for professional, site-scale workflows. Pix4D delivers immersive 3D visualization with data ready for measurement and site analysis.



Enterprise interoperability

Optimized SLPK export for seamless integration of Pix4D 2D and 3D data into Esri workflows.



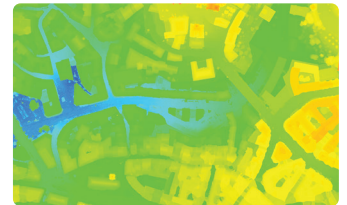
3D point cloud
.las, .laz



3D textured & scalable mesh
.fbx, .obj

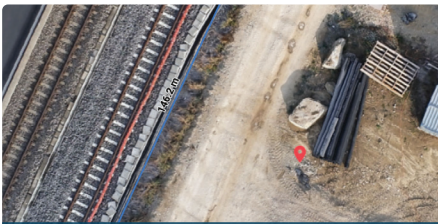


Orthomosaic
GeoTiff (.tif)



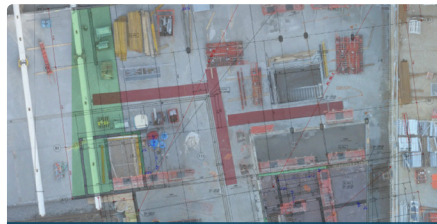
Digital Surface Model (DSM)
GeoTiff (.tif)

With a variety of tools



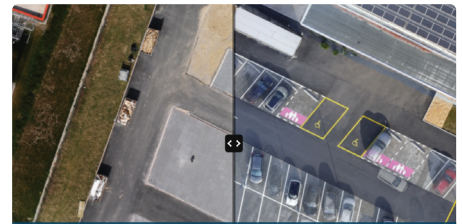
Measure, annotate, and share

Measure distances, highlight critical elements, and share data with your team, clients, or stakeholders



Overlay design plans and maps

Seamlessly compare as-built to as-designed for instant construction verification and error detection



Compare maps and 3D models over time

Track progress over time for a 2D and 3D comparison to see what has changed

Choose the plan that fits your needs

Starter

- Unlimited project collaboration
- Accurate 2D maps and 3D models from images
- Measure distances, areas and volumes
- Add / import annotations
- Export annotations to CAD / GIS
- Access to PIX4Dcatch Standard

Pro

All Starter features plus:

- Gaussian Splatting
- Auto GCPs supported to increase accuracy
- Track and document site progress
- Compare volumes over time
- 2D/3D Design overlay tool (DXF and IFC)
- Integration with Trimble and ESRI

Enterprise

All Pro features plus:

- Teams access control
- API access
- Webhooks
- SSO
- Custom Integrations
- Custom Storage
- Compatible with drone docks platforms



Try for free at pix4d.com/cloud