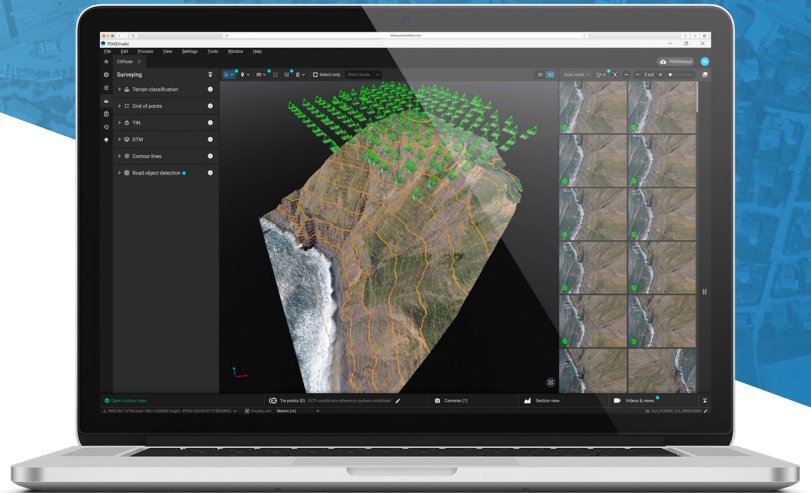




PIX4Dmatic



# The ultimate geospatial platform

From processing any capture to clean, CAD-ready geospatial data.

Robust processing and survey-grade extraction in a single workflow



## Intuitive workflow

Designed to be easy to learn and use, PIX4Dmatic streamlines your workflow from import to quality assessment in just a few clicks. Its powerful, professional features are accessible, making high-production work simple and fast.



## Accuracy and compatibility

Achieve survey-grade results by easily creating accurate 3D models. PIX4Dmatic allows you to combine PIX4Dcatch, drone, and LiDAR data from aerial and terrestrial sensors.



## End-to-end geospatial workflow

PIX4Dmatic is part of the Pix4D ecosystem, ensuring compatibility with mobile and cloud solutions (PIX4Dcatch and PIX4Dcloud). It also generates GIS- and CAD-ready outputs for an efficient end-to-end geospatial workflow.



# Highlights



## Combine aerial and terrestrial

Complement aerial drone mapping data with terrestrial PIX4Dcatch RTK data, calibrating projects separately with optimal processing settings, then merging them.



## High-performance processing

Process large datasets efficiently with a modern, high-performance engine optimized for both speed and accuracy.



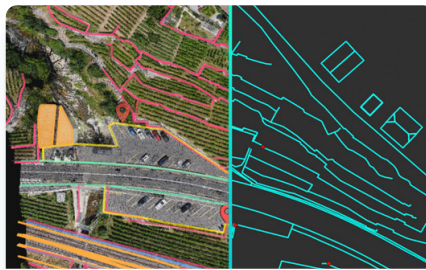
## Automated topographic extraction

Classify point clouds into terrain automatically or ASPRS classes to prepare clean datasets for surface creation, contour generation, and vector extraction in surveying and civil engineering workflows.



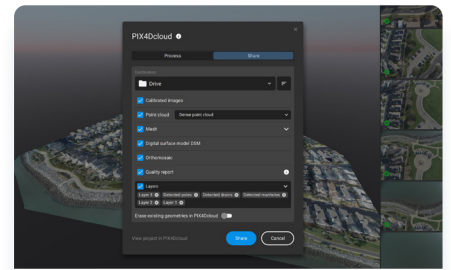
## Branded custom reports

Generate professional reports, complete with your company branding, project details, annotations, inventory, and volume cut/fill information, ready for stakeholder sharing.



## Outputs ready for CAD and GIS

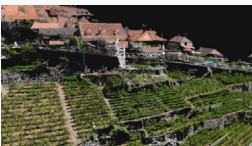
Export clean, well-structured files that drop straight into CAD or GIS software. No rework, no extra formatting, just files that are ready to use.



## Share to PIX4Dcloud

Classify point clouds into terrain automatically or ASPRS classes to prepare clean datasets for surface creation, contour generation, and vector extraction in surveying and civil engineering workflows.

# Essential outputs, without compromising accuracy



## Point cloud

.laz, .las 1.4, .las 1.2, .XYZ



## Orthomosaic

.tiff (GeoTIFF), .jpg (with .jgw, .prj, .tfw)



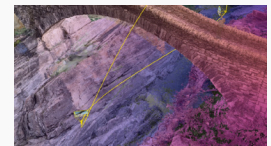
## Digital surface model (DSM)

.tiff (GeoTIFF), .prj, .tfw



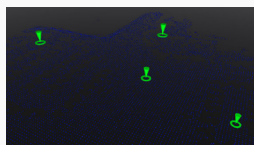
## Mesh

.obj, .slpk, .b3dm (tiles)



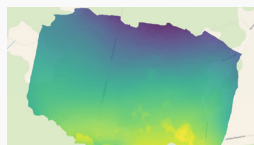
## Reports

Quality report (.pdf, .json), Custom reports (.pdf)



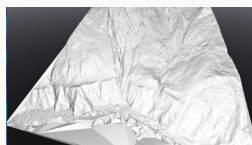
## Grid of points

.dxf, .zip (shp), .shp



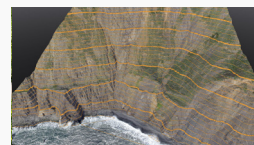
## Digital terrain model (DTM)

.tiff (GeoTIFF), .prj, .tfw



## TIN

.xml (LandXML), .tiff (GeoTIFF)



## Contour lines

.dxf, .zip (shp), .shp, .geojson



Try for free at  
[pix4d.com/matic](https://pix4d.com/matic)



Available for Windows & macOS